

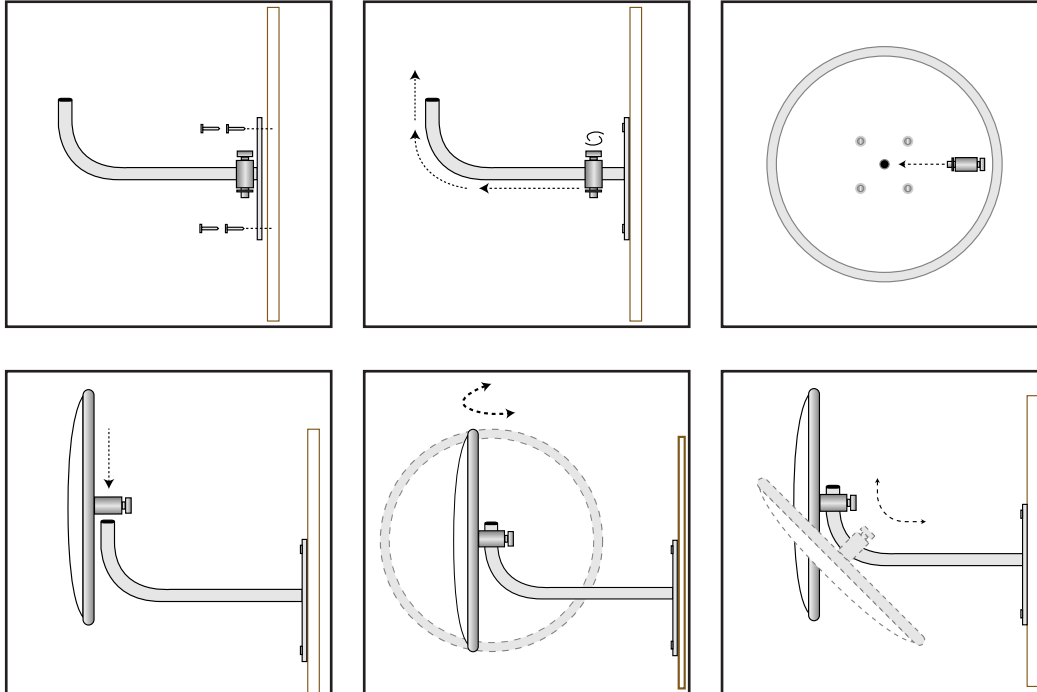


The Convex Mirror Shop

## HEAVY DUTY MIRROR INSTALLATION GUIDE

### Mounting Bracket To A Flat Surface:

1. Decide the appropriate place to site the mirror to give maximum vision.
2. Fix J-Bracket to wall or ceiling using suitable fixing hardware (ie: screws, bolts). Allowing enough room to get the mirror on to the J-Bracket.
3. Thread adaptor into the back of the mirror
4. Slide the adaptor and mirror over the J-Bracket and adjust mirror to the desired position.
5. Tighten the locking bolt on the adaptor securely.
6. (Remove protective film on acrylic model).





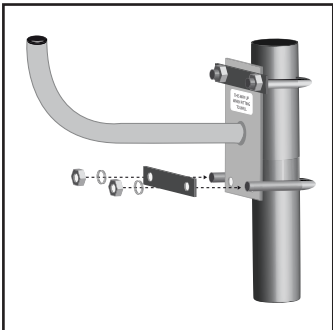
The Convex Mirror Shop

## HEAVY DUTY MIRROR INSTALLATION GUIDE

### Mounting Bracket To 3" Pole With U-Bolts: (U-Bolt Pack Purchased Separately)

1. Choose a 3" Round pole to attach the U-Bolts to.
2. For **12" - 18" - 24" - 30"** diameter mirrors:  
Thread the U-Bolts around the J-Bracket and through the U-Bolt Flat Plate.
3. For **32" - 36" - 40"** diameter mirrors:  
Thread the U-Bolts through one side of the J-Bracket and then through both sides of the U-Bolt Flat Plate.
4. Thread the Washer and Nut onto the U-Bolts and tighten.
5. Thread adaptor into the back of the mirror.
6. Slide the adaptor and mirror over the J-Bracket and adjust mirror to the desired position.
7. Tighten locking bolt on adaptor securely. (remove protective film on acrylic model).

**12" 18" 24" 30" mirrors**



**32" 36" 40" mirrors**

